

# PLATINUM ELITE™

Experience The Ultimate



ARTESIAN SPAS®  
EXPERIENCE THE ULTIMATE

*“The Power of Hydrotherapy  
the Art of Artesian”*



A close-up photograph of the interior of a hot tub, showing several circular jets with dark, textured nozzles set into a light-colored acrylic shell. The lighting is soft, highlighting the metallic finish of the jets.

## LUXURY REDEFINED

Luxury can be something of a subjective thing. What seems luxurious to one person may seem substandard at best to another. But there is a level of luxury that's so refined, so beautiful, and so impressive that it's unmistakable. The Platinum Elite line of spas from Artesian are the embodiment of that level of luxury. Every aspect of these spas is designed to provide the user with the ultimate therapeutic spa experience. Simply stated, no other spa in the market can measure up to the quality, features, and beauty of a Platinum Elite spa from Artesian.

A photograph of a hot tub with water flowing from two jets. The water is a vibrant blue, and the jets are black with blue accents. The background is dark, making the water and the tub's interior stand out.

## SERENITY REDEFINED

There are few sounds more universally soothing than that of running water. It speaks to the most elemental part of ourselves. It soothes us, calms us, and restores us. With that truth in mind, we designed each Platinum Elite spa with multiple AquaSerene™ water features which surround users with the soothing sights and sounds of gently falling water. Two pop-up fountains are infused with LED light and powered by the 24-hour circulation pump to provide a constant source of visual and auditory tranquility. Each Platinum Elite spa also includes two Pillowfall water features - also enhanced by LED lighting - which allow users to experience a calming cascade of water over neck and shoulders.





## COMFORT REDEFINED

When designing our spas we don't use the latest 3D modeling software - in fact, we don't even use a mouse. We use such blunt instruments as chisels, sand blocks, files and putty knives. Indeed, we take pride in just how primitive our design process is. We create our moulds the old fashioned way - we sculpt them by hand. The creation of the beautiful, organic forms that grace our spas is far more art than science, and the intimate human contact with our process ensures that our great designs are built for the human form.



## PERFORMANCE REDEFINED

Artesian's Platinum Elite spas are indeed beautiful. But our spas are far more than just aesthetically pleasing. Behind the graceful lines and pampering surfaces lies the most powerful, sophisticated system ever devised for moving and controlling the flow of water in a spa. This personalised water control system is what truly sets this Artesian spa line apart. The Platinum Elite spa moves more water volume through jets - with much greater power and less resistance than any other spa in the industry. Simply stated, you will not find a better performing, more therapeutic spa anywhere.







EXPERIENCE THE ULTIMATE

*“HAND –  
SCULPTURED  
TO FIT EVERY  
CONTOUR OF  
THE BODY  
PERFECTLY”*





A Class Leader in Hydrotherapy



Unflinching Quality & Attention to Detail



Unsurpassed Innovation & Design



Unrivalled Energy Efficiency



Complete Water Control at Your Fingertips



Engineered to be at the Peak of Luxury



Experience the Ultimate



platinum elite



# DIRECTFLOW™

why divert when you can direct?

The innovative patented DIRECTFLOW™ switchless motor and plumbing system of the Platinum Elite line makes use of highly efficient, long-lasting pumps and motors, located approximately under each hydrotherapy seat or positioned relative to a special feature such as the foot massage dome. Each seat is controlled by a DIRECTFLOW™ personal control panel consisting of an on/off switch, as well as an air control for the jets and a Variable Flow Control™ (VFC) located in easy reach of the spa user. VFC is an integral part of the DIRECTFLOW™ system. This patented valve gives users the ultimate in personalised control over the spa hydrotherapy environment.



## DIRECTFLOW™ FEATURES AND BENEFITS

- **ONE PUMP PER SEAT:** This allows for optimised efficiency and control by supplying exactly the desired amount of water to only the seats that are occupied, instead of turning on the whole spa.
- **ONE CONTROL PER SEAT:** Each spa occupant has their own DIRECTFLOW™ panel. This allows for personalised, ergonomically efficient control without having to move around the spa.
- **DIRECT WATER FLOW:** Water flows directly from the pumps to the jets with no diverters, valves or dead ends. This system provides maximum output with a minimum of resistance.
- **EFFICIENCY:** The DIRECTFLOW™ system allows the use of smaller, more efficient pumps. This, combined with the fact that each seat has its own pump and control, eliminating the need for diverters, means our spas operate with maximum efficiency and durability, greatly reducing the long-term cost of operation.
- **VARIABLE FLOW CONTROL™:** The VFC valve allows the user to regulate the water output from the pump by adding air into the line before the pump (decreasing output) and after the pump (increasing velocity), giving each user maximum massage control from their seating station. The VFC valve also eliminates traditional diverter valves, simplifying the plumbing of the spa and increasing durability while greatly reducing noise and energy costs.

**DIRECTFLOW**





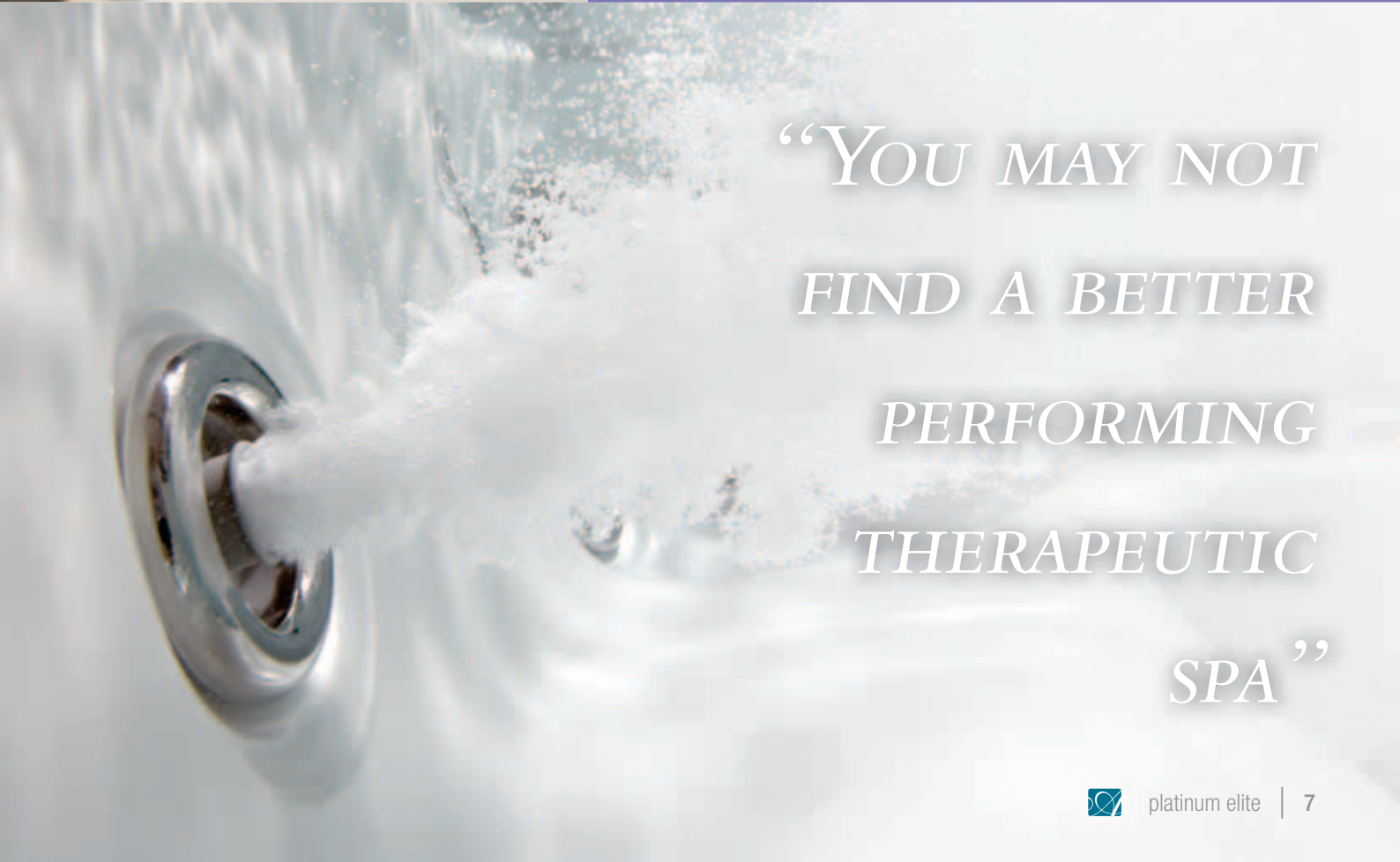
ULTIMATE POWER YOU CONTROL

## The Energy Saving Variable Flow Control™

The innovative patented DIRECTFLOW™ switchless motor and plumbing system of the Platinum Elite line combines with the patented Variable Flow Control™ (VFC) to provide each user with the ultimate hydrotherapy experience. The VFC itself is a dial that can be rotated to “high” for a full force massage or to “low” for a more relaxed massage. But the most unique aspect of this system is that you can turn the VFC to any massage pressure desired in between “low” and “high” (akin to a dimmer switch).

**“with the VFC turned to low the  
Pumps are using 50% less electricity  
than a traditional Spa with diverters”**

VFC is an integral part of the DIRECTFLOW™ system. This patented valve gives users the ultimate in personalised control over the spa hydrotherapy environment.



*“YOU MAY NOT  
FIND A BETTER  
PERFORMING  
THERAPEUTIC  
SPA”*







### **Worldwide WiFi Spa Control Wireless App**

Now you have the option to control your spa wirelessly!

This new Smartphone technology provides a wireless connection between you and your spa that allows you to control the therapy pumps of the spa, water temperature and lighting from anywhere in the world. It also has a spa maintenance function that can be set to tell you when to change your water, clean your filters and it even offers useful maintenance advice. This WiFi App is a must for those who love to set their own perfect spa ambience before stepping foot outside.



### **Harman Premium Infinity Media Stereo**

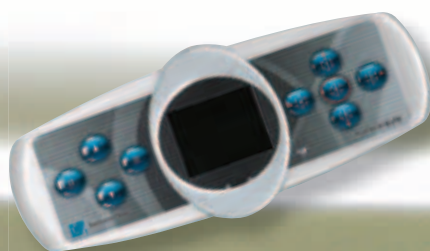
The Harman premium infinity system produces the ultimate in sound from multiple media formats, including iPod® and MP3 music players using the built-in auxiliary and USB ports as well as streaming wirelessly through Bluetooth.

The system also includes AM/FM Radio, 2 Pop-up Speakers, Power Sub-woofer and Wireless Remote Control. You also have the option of adding Harman Premium Patio Speakers to the Spa Cabinet.



### **PolyPlanar® Stereo**

Another innovative stereo option is the PolyPlanar® CD system. This is one of the best audio systems available and comes with a AM/FM receiver, MP3 connectivity, sub-woofer and floating remote. The built in pop up speakers can be rotated 360° to produce sound in which ever direction you choose.



### **Platinum Elite Smart Control Panel**

This user-friendly Smart Keypad utilises a computerised Digital Control System with colour LCD panel. Whilst using visible icons making control of the spa simple for the spa user, the keypad also features advanced functions making it WiFi ready and multi-lingual.



A woman with blonde hair tied back, wearing a black headband and a black halter-neck top, is relaxing in a hot tub. She is looking down at a black cylindrical device with a textured silver band, which she is holding with her right hand. The hot tub is white, and the background shows a blurred outdoor setting with autumn foliage.

ULTIMATE INNOVATION

*“A PREMIUM CLASS SPA  
SHOULD HAVE ONLY THE  
VERY BEST FEATURES AND  
THE PLATINUM ELITE RANGE  
TICKS ALL THE BOXES”*



# Helix Jets™ : A New Spin on Spa Jets

The Platinum Elite Spa line features a revolutionary breakthrough in hydrotherapy jetting with the patented Helix design; a three dimensional, double-spiral form.

The new jet, aptly named the Helix, has been designed to provide a truly remarkable hydro-massage exclusive to Artesian Spas. Engineered from the concept of the double helix, the jets use a right-directional spiral on the inside of the cylinder. This causes water to spiral out in a twisting manner, providing jet pulsation and great massaging pressure. As a complete system, these jets provide the very best in hydro-massage.



## **ProHelix™ jets**

Large rotary Helix jets providing a high volume of water to massage large muscles in the body. The jets can be set to provide a large or small sweeping massage that relaxes tense muscles.



## **TheraHelix™ jets**

Midsized Helix jets, strategically placed in small groups to massage muscles such as calf, hamstring, deltoids, biceps, and triceps. These jets provide a therapeutic massage to areas of the body where you need it most.



## **AccuHelix™ jets**

Small directional Helix jets placed in large groupings to massage larger regions of the body e.g. the entire back. These jets drive into muscles with pin point accuracy in a corkscrew manner giving a powerful massage.



## **Multi blasters**

Large jets with several outlets providing synchronised multiple blasts of water to effectively massage the lower back and feet.

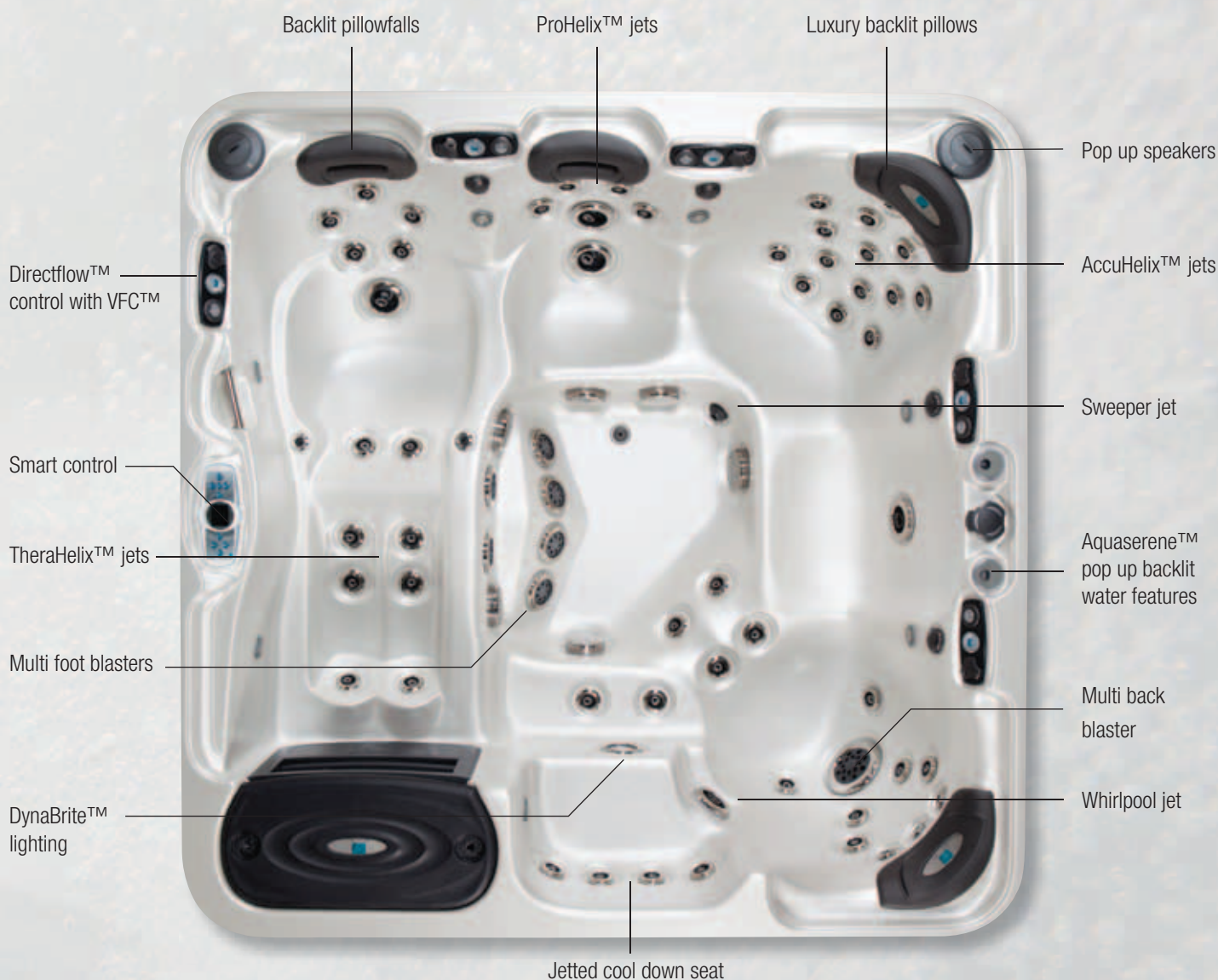


## **Whirlpool jets**

A whirlpool jet can be found on three of the four spas in this class. They have the capability to turn around large volumes of water in a whirlpool fashion giving you that wonderful feeling of water movement around the spa whilst you relax.



# ULTIMATE PERFORMANCE



*“ARTESIAN’S HELIX JETS™  
GIVE A SOOTHING, LUXURIOUS  
HYDRO – MASSAGE UNLIKE ANY  
OTHER”*



# Dynabrite™ LED Lighting System

Every Platinum Elite spa comes standard with the DynaBrite™ L.E.D. lighting system, which consists of a large main light, as well as lights in the pillows, pillowfalls and AquaSerene™ water features, an additional 7 underwater lights, and 2 exterior accent lights on the outside cabinet of the spa. This unique light show utilises multiple two-inch lens fixtures that house synchronised light generators. This ten-function system leaps to life with a touch of the button on the spa control pad. Each touch washes the water with up to five different coloured lights and allows the user the ability to stop on any one of the preferred colours. But the family of solid colours is not where the DynaBrite™ light show earns its name. Scroll further with the control button, and you will discover a multicoloured adventure with each touch. The final five functions are different combinations of colours set side-by-side in an artful transition. The DynaBrite™ L.E.D. Lighting System is your invitation to a truly dazzling spa experience.





# ULTIMATE RELAXATION

*“DYNABRITE™ LIGHTING PROVIDES  
A WONDERFUL AMBIENCE, THE  
ENTIRE SPA IS GLOWING WITH  
EVERY COLOUR IMAGINABLE”*



# ULTIMATE IN ENERGY EFFICIENCY

## Platinum Elite Spas-Unrivalled Energy Efficiency

**Packed with energy saving features & green technology - Platinum Elite Spas are the most energy efficient, cost effective spas on the market.**

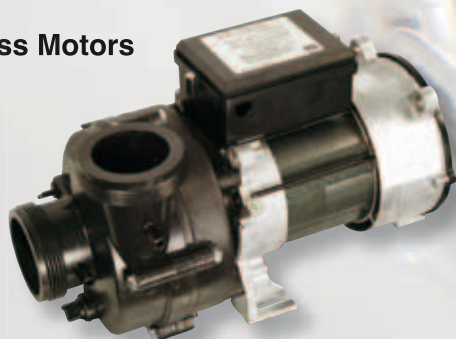
### **DirectFlow™ Technology with Variable Flow Control™**

The system utilises smaller, more efficient pumps with no diverters, valves or dead ends to provide maximum output with minimum resistance. The innovative VFC™ reduces the energy consumption of the pump by up to 50% when turned onto its lowest setting.

### **Artesian Smart Heater**

Artesian's Smart heater is an intelligent, remote water heating system. It varies its electricity requirements to suit, only drawing the electricity it needs to heat the water to the desired temperature.

### **Switchless Motors**



The revolutionary switchless motors drive high-water-volume pumps that are incredibly long lasting. The motors consist of up to 16 fewer parts than traditional motors and do not require a mechanical switch to take it from the start position to run position which greatly increases the efficiency of the motor. This also has the added benefit of drawing less electricity on the start up of the pump.

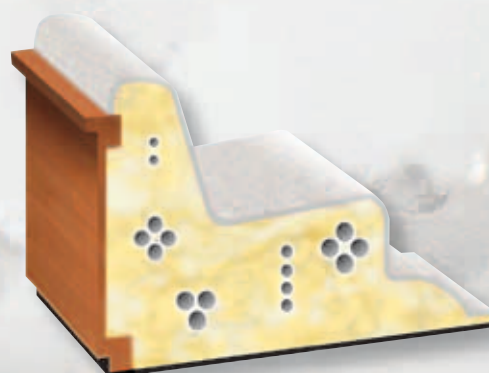
### **WhisperPure™ 24-hour Circulation**

This amazing circulation pump circulates the spa water up to 100 times a day. It circulates continuously, 24 hours a day, keeping your spa water wonderfully clean & clear. What makes this pump so amazing, is that it only draws 0.4 amp providing super high efficiency. It's also silent, so you won't even hear it working.

### **Maintenance Free Cabinets**



The beautifully designed PermaWood cabinets of the Platinum Elite range are made from a durable synthetic material that can withstand even the harshest of weather conditions. The cabinetry is maintenance free and will not rot or deteriorate. Best of all, no trees required!



### **Full Foam & Safety Cover**

Every Platinum Elite spa is fully foamed in the space between the maintenance-free cabinet and the structure. Artesian use the Icenyne® brand of foam which provides a high level of insulation to help the spa retain its heat. The foam conforms to all the curves and spaces providing a seamless air barrier that provides a consistent R-value to the spa. The Platinum Elite class spas come as standard with a luxury safety cover that is tapered from 5" to 3". This provides a thick insulation barrier that includes an insulating beam down the seam of the cover which is designed to help provide extra spa heat retention.



ARTESIAN SPAS®



# & WATER PURITY



## The Platinum Elite Spa Clean Water Story

The Platinum Elite Spa by Artesian is the highest performing, most efficient spa available today. This spa's innovative, frictionless micro-volt pump runs 24 hours a day, continuously filtering the water. It moves up to 30 gallons of water a minute through a 2-micron disposable filter, providing ten times greater filtration than the commonly used 50-sq. foot cartridge filters. For mere pennies a day, your spa water is cleaned by the finest spa filter offered in the industry.

Artesian carries the clean water factor a step further. Our CleanWater Management System utilises the Artesian Nature2 Mineral Stick coupled with the ProPure Ozone System. This enables the Platinum Elite Spa owner to maintain sanitised water automatically and with a major reduction in the use of harsh chemicals. Through controlled release, the Artesian Nature2 Stick maintains a base residual of bacteria-killing silver in the water. Having killed the bacteria, the silver clings to the dead bacteria and waits for a hyper-oxidizer to release it to kill again and again. The hyper-oxidizer is ozone that is produced by the ProPure Ozone System. Ozone is an agent that supplements the killing capacity of silver and frees up the silver to kill additional bacteria as it occurs. Just as ozone is produced by lightning and is nature's way of helping

to clean our atmosphere, an ozonator utilises an electrical charge to produce ozone into the spa, naturally killing bacteria in the spa and allowing for reduced chemical use in the water.

The ProPure Ozone System is far superior to a standard ozone system. Instead of injecting ozone into the spa water, as an ozonator does, the ProPure mixing chamber produces ozone in a separate chamber, which isolates the spa water and ozone together. This mixing chamber is more effective at destroying bacteria that may be present in the water. The ozone-purified water is cycled back into the spa and more water is brought into the chamber. This cycle gradually brings all spa water through the mixing chamber for purification. This process greatly reduces the possibility of corrosion to the spa cover caused by ozone, as well as odor sometimes caused by ozone that is injected into spa water.

The CleanWater Management System is simply the best offered in the home spa industry. Combining Artesian's magnetic 24-hour circulation pump, the exclusive 2-micron disposable filter, Nature2\* technology, and ProPure ozone results in water so clean that it exceeds the EPA's standard for bottled drinking water.

NOTE: this water care system does not balance the acidity (PH) of the water, which must be regularly monitored to ensure the effectiveness of this (or any) water care system.  
Use of dichlor may be required at start up or for intermittent aggressive treatments.  
\*Nature2 is an optional feature.



### Lucite with Microban

Spas made with Lucite® cast acrylic have always been easy to clean. Now Lucite International has taken Lucite® acrylic surfaces to the next level by incorporating Microban® antimicrobial product protection which inhibits the growth of bacteria that

can cause odor, stains and product degradation. Microban® won't wear off with time because it's actually built in the spa's surface.





# PELICAN BAY



**2.75m x 2.35m x 0.97m**



## **specifications**

seating capacity	8
dry weight	500 Kg
filled weight	2580 Kg
water capacity	2080 Ltrs
pumps	x 5 Therapy Pumps
circulation / filtration	24-hr Whisper Pure™
directflow controls	5
heater	Artesian Smart Heater
full foam	yes
light	DynaBrite™ LED
filter type	(2) 50 sq ft pleated (1) disposable Micron

**jets**

**69**

The all new Pelican Bay offers the most space a Platinum Elite spa has ever offered. This spa features an astonishing 69 high-performance, sophisticated jets and five therapy pumps, as well as a WhisperPure circulation system with a high flow pump. The Pelican Bay Platinum Elite spa does not sacrifice therapy or performance for the sake of size.

# PIPER GLEN



**2.35m x 2.35m x 0.97m**



## ***specifications***

seating capacity	7
dry weight	440 Kg
filled weight	2350 Kg
water capacity	1910 Ltrs
pumps	x 5 Therapy Pumps
circulation / filtration	24-hr Whisper Pure™
directflow controls	5
heater	Artesian Smart Heater
full foam	yes
light	DynaBrite™ LED
filter type	(2) 50 sq ft pleated (1) disposable Micron

***jets***

**67**

It's no wonder the Piper Glen was awarded the Consumers Digest "Best Buy" Award in the Premium Category of spas. Loaded with 67 high-volume, sophisticated massage jets and four full-therapy seats, the Piper Glen certainly offers the ultimate spa experience.



# DOVE CANYON



**2.35m x 2.35m x 0.97m**



## **specifications**

seating capacity	6
dry weight	410 Kg
filled weight	2210 Kg
water capacity	1800 Ltrs
pumps	x 5 Therapy Pumps
circulation / filtration	24-hr Whisper Pure™
directflow controls	5
heater	Artesian Smart Heater
full foam	yes
light	DynaBrite™ LED
filter type	(2) 50 sq ft pleated (1) disposable Micron

## **jets**

**67**

This feature-packed Platinum Elite spa shares similar dimensions and assets with the Piper Glen. However, its dedicated lounger, with dual rotating foot jets and calf massage, makes this a unique spa. A hallmark of the Platinum Elite line, the versatile triad seat features wraparound, high-flow, adjustable jets and offers multiple variations of hydro-massage options.

# QUAIL RIDGE



**2.35m x 2.02m x 0.89m**

## ***specifications***

seating capacity	5
dry weight	270 Kg
filled weight	1575 Kg
water capacity	1305 Ltrs
pumps	x 4 Therapy Pumps
circulation / filtration	24-hr Whisper Pure™
directflow controls	4
heater	Artesian Smart Heater
full foam	yes
light	DynaBrite™ LED
filter type	(2) 50 sq ft pleated (1) disposable Micron

***jets***

**58**

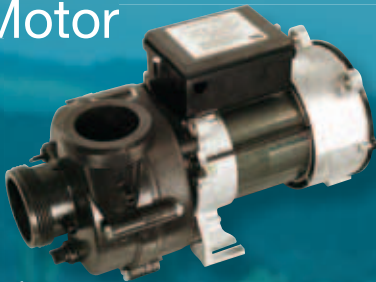
This midsize spa is ergonomically designed to keep you in place as the jets work their wonder. This spa offers a dedicated lounge with armrests and a dynamic, super-massage foot and leg well in the lounging position. The Quail Ridge is a space saving spa that will fit through most doors, yet it easily gives you all the luxury and comfort that are characteristic of the Platinum Elite spa line.



## STANDARD FEATURES

### Switchless Motor Technology

The revolutionary switchless motors used in the Platinum Elite spas drive high-water-volume pumps that are long-lasting and virtually trouble-free. The result is the most energy-efficient, cost-effective spa on the market today!



The switchless motor design does not require a mechanical switch to take it from the start position to run position, which greatly increases the efficiency of the motor. It also diminishes operating noise, such as the vibration and electrical noise heard with conventional motors. An added bonus of the switchless motor is this design requires from 10 to 16 fewer parts than a conventional motor, which means many potentially problematic components have been eliminated. The life of our switchless motors can be measured in tens of years instead of hundreds of hours.

### WhisperPure™ Circulation System

The amazing 30 gal at .4 amp super high efficiency pump circulates all the water in the spa through our special Micron filter and through the high-yield ProPure ozonator and heater, up to 100 times per day. Our WhisperPure™ circulation system with Silent pump technology is so quiet you won't believe it's working as hard as it does.

### PermaBase ABS Floor

The ABS floor is a fully moulded base that protects the under side of your spa from the elements.

### AquaSerene™

Every Platinum Elite spa comes standard with multiple, serenity-enhancing AquaSerene™ water features. Two pop-up fountains, powered by the 24-hour circulation pump, provide a constantly available source of visual and auditory tranquility.

### A Green Spa?

All the performance in the world can be wasted if it's not efficient. The Platinum Elite DirectFlow™ system, utilising our switchless pumps keeps your electric bills low. Because of their lower power requirements and the control of water flow, our pumps actually deliver more water with less resistance. This combined with our patented VFC's means a Platinum Elite spa may cost 50 percent less to operate than a traditionally built spa. You should relax in your Platinum Elite spa, knowing that luxury and high performance do not mean increased consumption and high cost.



### Pillowfall Water Features

Each Platinum Elite spa also features 2 soothing waterfalls with all their tranquil effects. Simply enjoy the serene sound of the falling water or nestle under and feel the warm water sweep down your neck and back. With our standard DynaBrite™ lighting system, both the Pillowfall and fountains are infused with LED light.



## STANDARD FEATURES...CONTINUED

### ProPure Ozone: natural clarity is a beautiful thing

What does ozone do for your spa water? ProPure ozone destroys bacteria, viruses, and mildew, and eliminates spores and fungus, as well as oils and other contaminants. It keeps your spa water clean, clear and fresh. ProPure ozone ultimately enhances the performance of chlorine and bromine in your spa and allows you to use substantially smaller amounts of those chemicals to achieve and maintain sparkling, clean water. The vortex mixing chamber provides the maximum output.

### Platinum Elite Micron Filter

The Platinum Elite disposable micron filter creates a unique filtration method for spas with circulation systems. Lower density fibres are used on the surface of the filter, with higher density fibres nearer the centre. This increases the dirt-holding capacity of the filter cartridge, as well as greatly increasing the efficiency of the filter and the clarity of the water. This disposable filter design improves water circulation while reducing the use of chemicals in your spa, and it has proven to be much more efficient and effective than the standard pleated cartridge filter.

### Full Foam Insulation

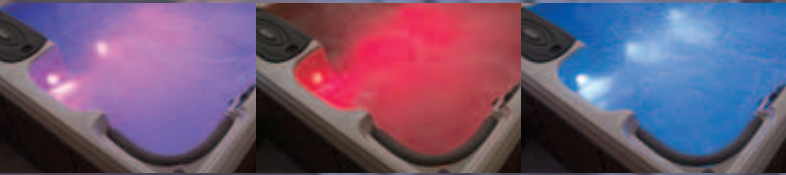
The space between the maintenance-free cabinet and the structure is filled with high-insulation foam. Full-foam insulation combined with our heavy-duty spa cover works to ensure the best rate of heat retention available in any spa. But that's not all! Full foam insulation offers a host of other benefits, such as a stronger spa structure and less wear on plumbing welds by holding all jets and hoses securely in place. This dramatically increases the lifespan of the plumbing by virtually eliminating movement and vibration.

### Durable Acrylic Shell

Every Artesian spa has a durable shell constructed of beautiful acrylic with our lifetime Diamond bond backing. Our jets rotate on bearings rather than plastic for ease of adjustment, and our pillows are a dyed-through, closed-cell foam to prevent cracking, discolouration, and water absorption.

### Long-lasting PermaWood Cabinet

At Artesian, we ensure that you get the best possible value by producing the highest quality spas available today. Every Platinum Elite Spa comes standard with a long-lasting PermaWood cabinet and a full ABS base, as well as a bottom drain for easy water changing.



### DynaBrite™ LED System

A sensory Multi colour LED light show consisting of 1 main spa light, an additional 7 light lenses placed around the spa, backlit pillows, pillowfalls, aquaserene water features and 2 cabinet accent lights.

### Helix:

### A New Spin on Spa Jets

All Platinum Elite Spas feature a revolutionary breakthrough in hydrotherapy jetting with the patented Helix design; a three-dimensional, double-spiral form. This new jet, aptly named the Helix, has been designed to provide a truly remarkable hydro-massage exclusive to Artesian Spas. Engineered from the concept of the double helix, not only do the jets rotate, but they use a right-directional spiral on the inside of the cylinder. This causes water to spiral out in a twisting manner, providing jet pulsation and massaging pressure that is unsurpassed by any other spa.



## OPTIONAL

### Artesian Stereo Systems

Your search for the ultimate multi-sensory spa experience is over. Artesian's Platinum Elite spas now offer two Stereo Systems which are the most innovative audio systems available for today's spa environment.



### Poly-Planer CD Stereo

Poly-Planar® Watertight AM/FM Receiver and CD player with MP3 Jack, pop up speakers and floating remote.



### Artesian Patio Speakers

When you want music on the patio but are not using your spa! At the flick of a switch you have high quality sound from the 5" dual cone waterproof speakers on the spa cabinet. No need to lift the cover and waste heat!

### Harman Premium Infinity Media Stereo



The Harman premium infinity system produces the ultimate in sound from multiple media formats, including iPod® and MP3 music players using the built-in auxiliary and USB ports as well as streaming wirelessly through Bluetooth. The system also includes AM/FM Radio, 2 Speakers, Power Sub-woofer and Wireless Remote Control.

### Harman Patio Speakers

Listen to your favourite music whilst gardening or relaxing on your patio. These exterior Harman speakers provide unrivalled sound quality.

## FEATURES

### Crystal AOP™



This revolutionary system combines Micro-filtration, high efficiency circulation, UV sterilisation, Ozone and Artesian's ProPure Mixing Chamber to create the most advanced oxidation process (AOP) for water purification.

Crystal AOP produces a much more advanced method for even clearer, cleaner spa water.

### Worldwide WIFI App

Now you can control your spa from your iPod®, smartphone or other smart device from anywhere in the world with this wireless innovative App. You can control the lighting, temperature and pumps of your spa. This App even provides you with a helping hand for spa maintenance.



### ProGuard Cover

The ProGuard has a 150mm to 100mm tapered high-density Dura-Core foam insert with 18-gauge galvanised steel c-channel beams and is capable of withstanding 270kg across the cover surface.

### Artesian Nature 2

This enables the Platinum Elite spa user to maintain sanitised water automatically with a major reduction in the use of harsh chemicals. The Artesian Nature 2 maintains a base residual of bacteria killing silver in the water. (Please note: not compatible with Bromine).



Java Rock



Sandstone

### Maintenance Free Rock Cabinet

Beautiful, long-lasting Rock cabinetry is an available option that adds years of maintenance-free life to your spa. Maintenance free cabinetry will not rot, rust, warp, deteriorate or require replacement. Panels are made of a durable, synthetic material that can withstand the harshest weather conditions, including snow, humidity, rain, sleet, and heat. This all-weather durable, fade and stain resistant Rock cabinet requires no painting or staining. Easily clean-up these cabinets with soap and water, if necessary. Best of all, no trees required!

# EXPERIENCE THE ULTIMATE

## Standard Features

Patented DirectFlow™ Technology  
 Energy Saving VFC's  
 Individual Controls Per Therapy Pump  
 Patented Helix Jets™  
 DynaBrite™ Multi LED Lighting  
 2 Pillow Falls  
 2 AquaSerene™ Water Features  
 WhisperPure™ 24hr Circulation System  
 Long-Lasting Switchless Pumps  
 Artesian Smart Heater  
 Artesian Smart Control Pack  
 Platinum Elite Backlit Smart Pad Control  
 ProPure™ Ozone Water Treatment  
 Three Filter Water Management (Inc.1 Disposable Micron Filter)  
 Adjustable Jets To Give You Total Control  
 Stainless Steel Escutcheons  
 Full Foam  
 PermaBase™ ABS Floor  
 Full Bottom Drain  
 3" to 5" ASTM Super Cover  
 PermaWood™ Cabinets  
 Jetted Cool Down Seats - an Artesian Exclusive  
 Sweeper Jet

## Optional Features

Worldwide Wireless Spa Control App  
 For Smart Technology & Smart Phones  
 PolyPlanar CD & MP3 Stereo System (Inc. 2 Pop-Up  
 IR Speakers, Sub-Woofer & Floating Remote)

Artesian Black Patio Speakers (5")

Harman Premium Infinity Media Stereo inc. Floating  
 Remote

Harman Silver Trim Patio Speakers (6.5")

Crystal AOP™

Artesian Nature 2 Cartridge

Pro-Guard Cover

Maintenance Free Rock Cabinet (In Java Or Sandstone)

## Warranty

Structure 12 Years

Surface 7 Years

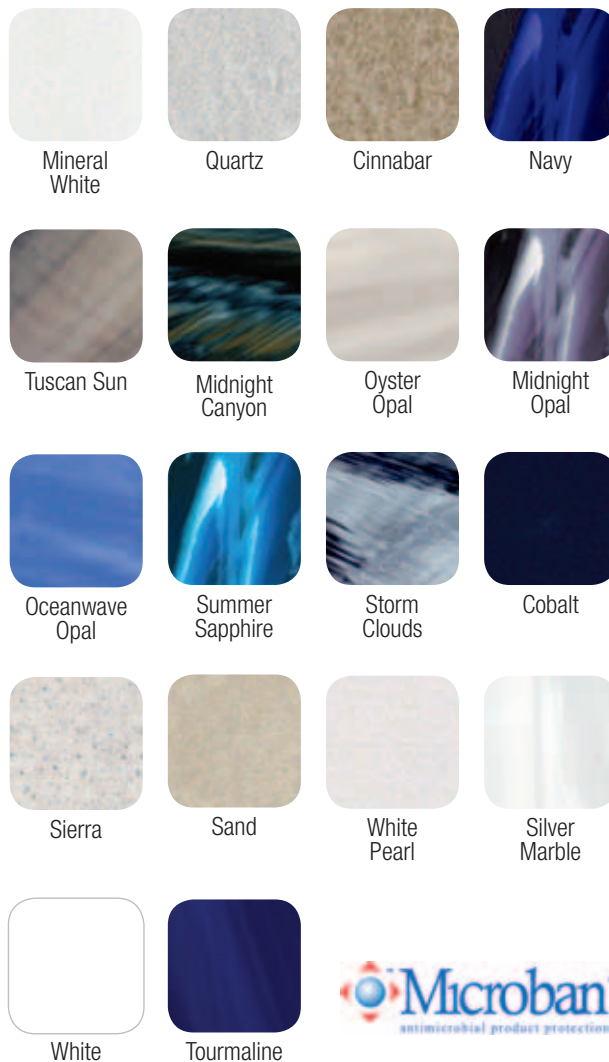
Parts & Plumbing 3 Years

Labour 3 Years

PermaWood™ Cabinet 2 Years

NOTE:- Specifications subject to change without notice.

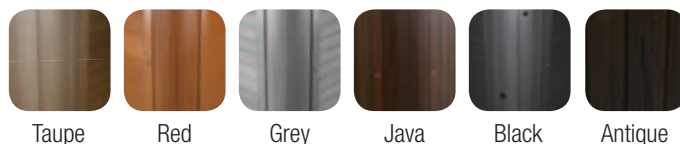
## Acrylic Colours



Artesian proudly offers cast acrylic with antimicrobial protection. Tested safe and registered with the EPA, Microban penetrates and disrupts key cell functions of micro-organisms. Although spa owners should still follow a regular maintenance program, Microban inhibits the growth of bacteria that cause odours and stains between cleanings.

Pelican Bay available in Silver Marble, Quartz, White Pearl, Oyster Opal, Midnight Opal, Tuscan Sun, Sierra & Mineral White only.

## Perma Wood Cabinets





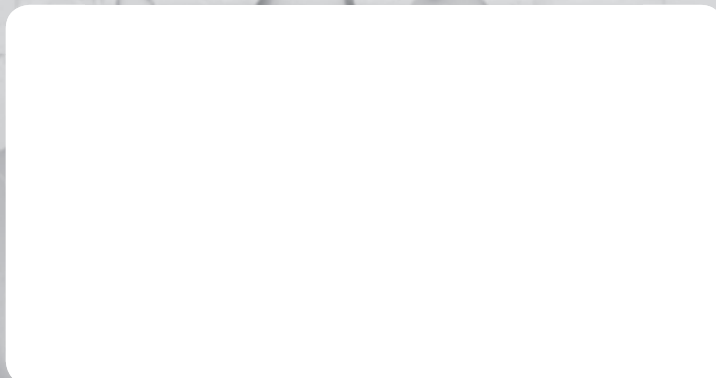
# PLATINUM ELITE™

Experience The Ultimate



ARTESIAN SPAS®  
EXPERIENCE THE ULTIMATE

Your Nearest Authorised Artesian Dealer is:



BEST OF CLASS  
★★★★★  
poolandspa.com



Phone: +44 (0) 1302 730295 Fax: +44 (0) 1302 366023  
Web: [www.artesianspas.co.uk](http://www.artesianspas.co.uk) Email: [info@artesianspas.co.uk](mailto:info@artesianspas.co.uk)